



When you need a High Quality Opening

Alfa Laval Access Tank Cover - Circular Cover Type LKDC

Application

The circular LKDC stainless steel manhole cover is used on top of tanks or containers, especially in the dairy industry, where a hygienic closeable mean of access to the interior of the tank is required.

Working principle

The LKDC cover is supplied with a unique replaceable, self-sealing double lip seal (see fig. 2.) to prevent fluids from spraying out, e.g. during CIP cleaning and similar processes or during travel on mobile tanks or road tankers. The seals are produced in compliance with 3A recommendations.

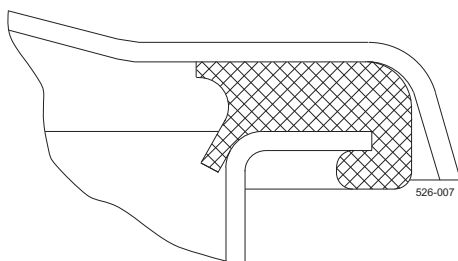


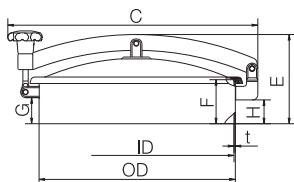
Fig. 2. Double lip seal

TECHNICAL DATA

Working pressure: No pressure

Certificates

3.1 certificate



PHYSICAL DATA

Materials

Lid and frame: 1.4301 (304) or 1.4404 (316L)

Plastic parts: Nylon

Seals: EPDM or NBR or FPM or Q (silicone)

Surface finish: Acid Pickled

Product wetted surfaces: Ra 0.8µm

Other surfaces: Ra 0.8µm

3A surface finish: Electro polished

Product wetted surfaces: Ra 0.4µm

Other surfaces: Ra 3.0µm

Temperature

Min. temperature: - 20°C

Max. temperature: + 90°C (NBR)

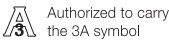
(Q) gasket + 100°C

(EPDM, not for oil and fat) + 140°C

(FPM flourinated rubber) + 140°C

Dimensions (mm)

Size/OD	202	306	404	454	454	516	516	620	620
ID	198	302	400	448	448	510	510	614	614
F	85	100	100	100	200	100	200	100	200
t	2	2	2	3	3	3	3	3	3
C	354	457	555	609	609	675	675	778	778
G	48	64	64	60	160	55	155	64	164
H	43	64	59	60	160	56	156	59	159
E	156	146	178	201	301	197	297	203	303
Cover thickness	1.5	1.5	2	2	2	3	3	3	3
Weight (kg)	3.4	6.3	8.3	12.2	15.8	14.4	17.7	18.8	24.3



Alfa Laval reserves the right to change specifications without prior notification. ALFA LAVAL is a trademark registered and owned by Alfa Laval Corporate AB.

ESE02099EN 1507

© Alfa Laval

How to contact Alfa Laval

Contact details for all countries are continually updated on our website. Please visit www.alfalaval.com to access the information direct.