

# SGA Spray Dryer

- ✓ Capacity 50-3,000 liter/hour (13.2-792.5 gallons/hour)
- ✓ Space saving horizontal box design

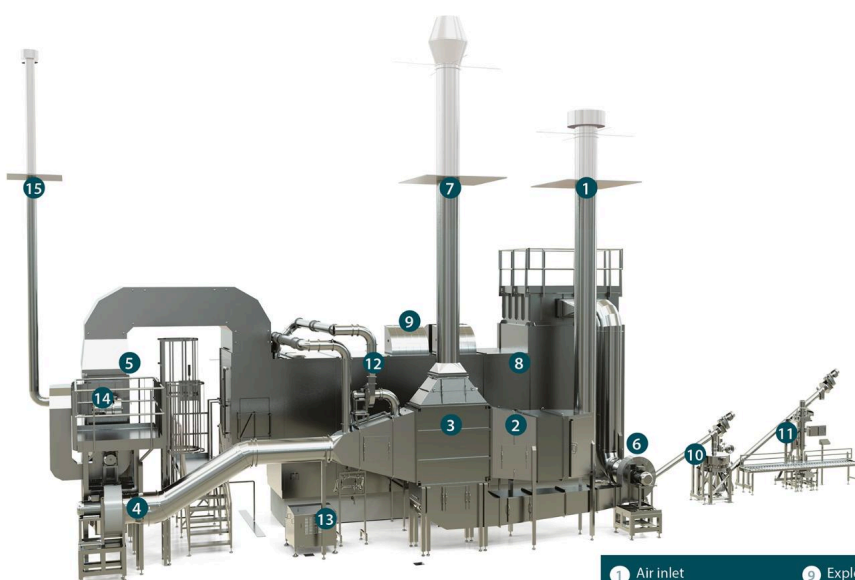
The SANOVO Gentle-Air Horizontal Box Spray Dryer can be used on a wide range of food or feed products ranging from animal by-product to plant proteins, among others. Producing a long-lasting shelf stable powder ingredient will bring more value and application opportunities when compared to unprocessed raw materials. Various spray drying plant sizes are available with water evaporation capacity to 3000 kg/hour. This ensures suitability for new and innovative startup companies, as well as well-established larger powder producers.

A horizontal box dryer differs from Spray drying towers by being horizontal and box shaped and therefore it is generally more compact and can often be installed in an existing building. Low CapEx, higher yield, nozzle atomization, easy operation and preserved product properties are just some of the unique product benefits of the SANOVO Gentle-Air Horizontal Box Spray Dryer.

Learn more about features and benefits below or contact us for additional information.

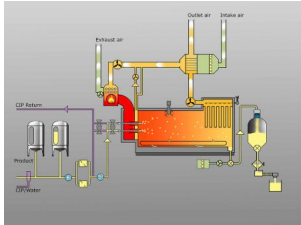
# Specifications

Model	Water evaporation capacity
SGA 10/1	Min. kg/hour: 55 Max. kg/hour: 100
SGA 50/2	Min. kg/hour: 275 Max. kg/hour: 500
SGA 100/4	Min. kg/hour: 550 Max. kg/hour: 1.000
SGA 150/6	Min. kg/hour: 825 Max. kg/hour: 1.500
SGA 180/9	Min. kg/hour: 975 Max. kg/hour: 1.775
SGA 225/9	Min. kg/hour: 1.250 Max. kg/hour: 2.275
SGA 300/12	Min. kg/hour: 1.650 Max. kg/hour: 3.000



- |                      |                               |
|----------------------|-------------------------------|
| 1 Air inlet          | 9 Explosion protection        |
| 2 Inlet air filter   | 10 Powder sifter              |
| 3 Heat recovery unit | 11 Powder packing station     |
| 4 Inlet fan          | 12 Cooling fan, orifice plate |
| 5 Air heater         | 13 High pressure pump         |
| 6 Exhaust fan        | 14 Burner                     |
| 7 Air exhaust        | 15 Flue gas exhaust           |
| 8 Drying chamber     |                               |

# Features



## Horizontal spray drying

The SANOVO Gentle Air Box Dryer is designed for a wide range of food products and to produce high quality powders at the lowest energy consumption. The technology is characterised by an improved insulation, hygienic design, simple operation and long running time between cleanings.

Horizontal box dryers offer some unique benefits when compared to the vertical spray drying towers. Unlike the enormous vertical spray drying towers, horizontal spray dryers do not require tall buildings to surround them. Most times a horizontal spray drying plant will fit in already existing building thus reducing the cost of installation significantly.



## ATEX compliant

The ATEX directives consists of two EU directives describing the minimum safety requirements of the workplace and equipment used in explosive atmosphere. SANOVO's Spray Box Dryer has an ATEX type-examination certificate to ensure compliance with all legislation and standards.

The dryer may only be used according to the manufacturer's specifications for the actual dryer. Each dryer is optimized for the actual explosion safety data for the specified powder.

Our ATEX specifications: II 1/3 D Ex h IIIB T150°C ...250°C Da/Dc



## Superior drying condition by unique designed plenum

Process air is distributed through a unique designed plenum for constant air flow over the individual spray nozzles. Wall (orifice plate) between plenum and drying chamber is cooled with temperate air to minimise scorched (discolouring) particles and solubility or sediment problems.



## Optimized nozzle geometry

Numerous tests and trials with nozzle geometry have been carried out to obtain optimized air flow in the drying chamber ensures a minimum powder buildup on walls.



## Minimum powder loss integrated bag filter

Easy and fast change of product without lifting equipment from the top of the drying chamber when changing the product or cleaning. No external powder conveying ducts as the bag filter is integrated into the drying chamber. This minimizes the loss of product and complies with global environmental standards for emissions.

# Main offices

## EUROPE

### SANOVO TECHNOLOGY DENMARK

Datavej 3  
5220 Odense SØ  
Denmark

Tel.: +45 66 16 28 32

### SANOVO TECHNOLOGY NETHERLANDS

Ambachtsstraat 4  
7122 MP Aalten  
The Netherlands

Tel.: +31 543 473 868

### SANOVO TECHNOLOGY ITALY

Via dell'Industria 68  
I-36035 Marano Vicentino (VI)  
Italy

Tel.: +39 0445 334 505/868 201

### SANOVO TECHNOLOGY PROCESS

Datavej 12  
5220 Odense SØ  
Denmark

Tel.: +45 66 16 28 32

### SANOVO PROCESS SOLUTIONS

Datavej 3  
5220 Odense SØ  
Denmark

Tel.: +45 66 16 28 32

## THE AMERICAS

### SANOVO TECHNOLOGY USA

15180 Keel St  
Plymouth, MI 48170  
USA

Tel.: +1 248 662 1030

### SANOVO TECHNOLOGY SOUTH AMERICA

Rua Natal, 541 - Vila Bertioga, Mooca  
CEP - 03186-030  
Sao Paulo - Brazil

Tel.: +55 11 2020-7702

### SANOVO TECHNOLOGY MEXICO

Querétaro  
Mexico

Tel.: +52 442 325 7224

### RAME-HART

3 Wing Drive, Suite 240  
Cedar Knolls, NJ 07927  
USA

Tel.: +1 973 335 0560

## ASIA

### SANOVO TECHNOLOGY CHINA

Building 3, No 139 Datieqiao Road  
Songjiang, Shanghai  
China

Tel.: +86 21 52340966

### SANOVO TECHNOLOGY ASIA

Level 3A-2, Menara Mudajaya  
No. 12A, Jalan PJU 7/3, Mutiara Damansara  
47810 Petaling Jaya, Selangor, Malaysia

Tel.: +603-4820 8301

### SANOVO TECHNOLOGY JAPAN

1-9-6-6F Shiba, Minato-ku  
Tokyo 105-0014  
Japan

Tel.: +81 3 6809-3700

**SANOVO**   
TECHNOLOGY GROUP

 **THORNICO**  
Company